

# THE HATFIELD MANOR GARDENS

2 | 

1 | 

1 | 



## KEY FEATURES

- 2 double bedrooms
- Separate kitchen
- Spacious living/diner
- Patio doors to rear garden
- Downstairs W.C
- 2 parking spaces

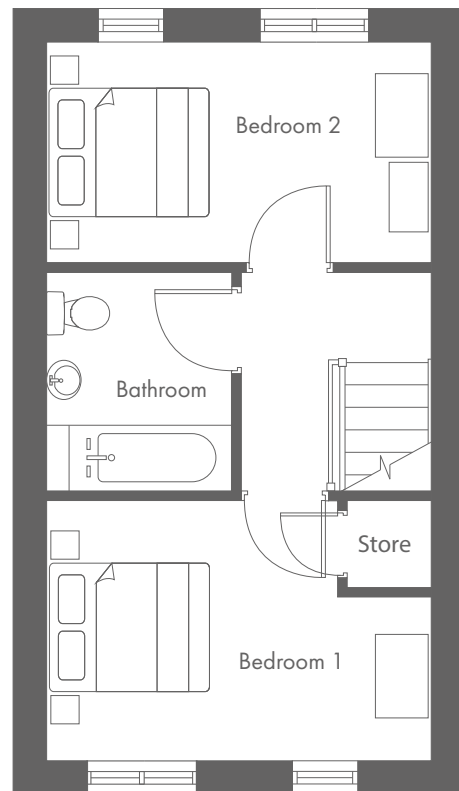
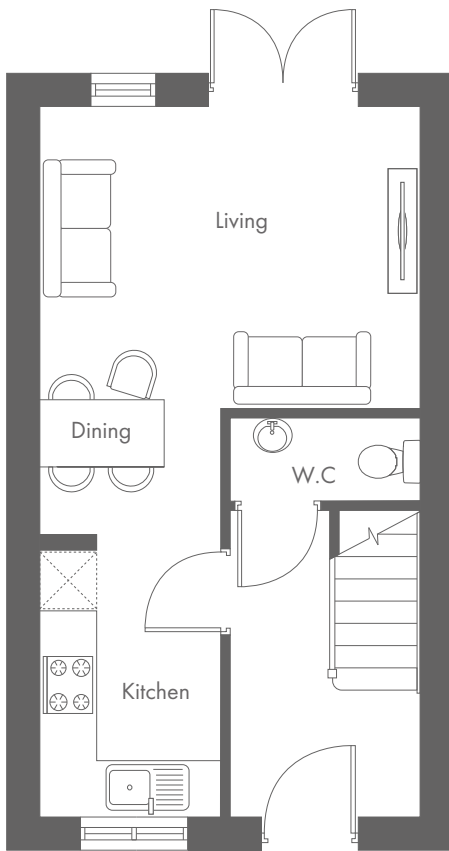


**The Hatfield**  
Shared Ownership plots  
58 – 62

**MANOR GARDENS, CHESTER ROAD, HARTFORD CW8 1LJ**

A range of contemporary 2, 3 & 4-bedroom houses and 2-bedroom bungalows

# THE HATFIELD MANOR GARDENS





Ground Floor	Metric	Imperial
Living/Dining	4.0 x 3.2	13'1" x 10'6"
Kitchen	4.4 x 2.0	14'5" x 6'7"
W.C	2.0 x 0.9	6'7" x 2'11"


First Floor	Metric	Imperial
Bedroom 1	4.0 x 2.8	13'1" x 9'2"
Bedroom 2	4.0 x 2.3	9'10" x 7'7"
Bathroom	1.9 x 2.3	6'3" x 7'7"


CONTACT OUR TEAM

 01606 822 936

 [yourhousinggroup.co.uk](http://yourhousinggroup.co.uk)

 @yourhousinggroup

 @Your\_Housing

 @yourhousing