

# THE UPTON MANOR GARDENS

3 | 

2 | 

1 | 



## KEY FEATURES

- 2 double bedrooms & 1 single bedroom
- Utility room
- Integrated garage
- En-suite from master bedroom
- Spacious kitchen/diner
- Bay windows in lounge and master bedroom



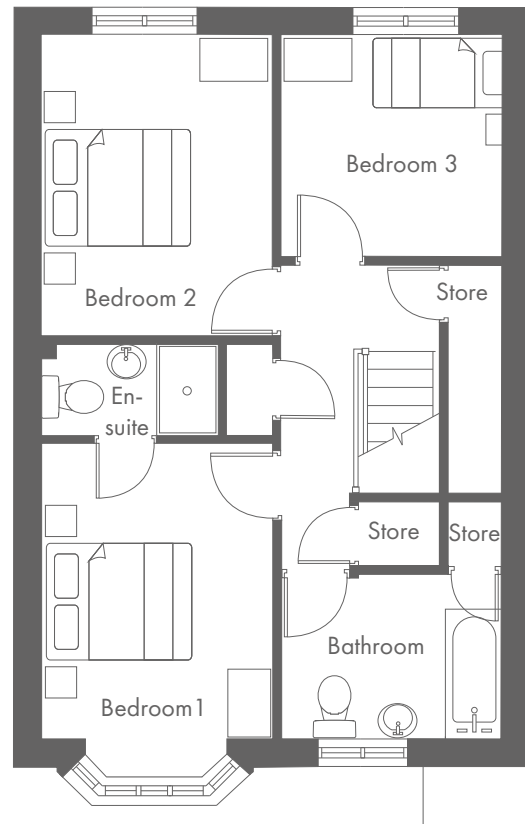
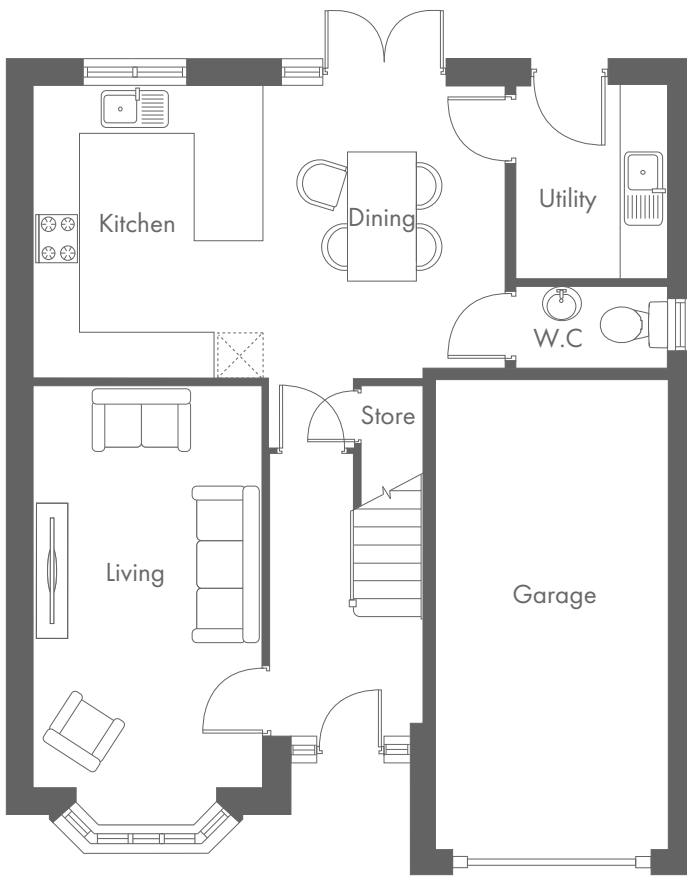
### The Upton Shared Ownership plots

1- 2, 5-8, 23-25,  
30-31, 39, 44, 49,  
55, 79-83, 99-100  
and 108

**MANOR GARDENS, CHESTER ROAD, HARTFORD CW8 1LJ**

A range of contemporary 2, 3 & 4-bedroom houses and 2-bedroom bungalows

# THE UPTON MANOR GARDENS





Ground Floor	Metric	Imperial
Kitchen/Dining	6.3 x 3.8	20'8" x 12'6"
Utility	2.5 x 2.0	8'2" x 6'7"
Living	3.0 x 5.3	9'10" x 17'5"
W.C	1.1 x 2.0	3'7" x 6'7"
Garage	6.2 x 3.1	20'4" x 10'2"


First Floor	Metric	Imperial
Bedroom 1	3.0 x 3.9	9'10" x 12'9"
Bedroom 2	3.0 x 4.0	9'10" x 13'1"
Bedroom 3	2.9 x 2.7	9'6" x 8'10"
En-suite	2.3 x 1.2	7'7" x 3'11"
Bathroom	2.7 x 2.4	8'10" x 7'10"


CONTACT OUR TEAM

 01606 822 936

 [yourhousinggroup.co.uk](http://yourhousinggroup.co.uk)

 @yourhousinggroup

 @Your\_Housing

 @yourhousing