

THE GATLEY WHITEFIELD BROOK



3 | 

1 | 

1 | 

KEY FEATURES:

- Two double bedrooms and one single bedroom
- Spacious lounge
- Patio doors to rear garden
- Driveway parking
- Integrated kitchen appliances

WHITEFIELD DRIVE, KIRKBY, LIVERPOOL L32 4TD

A range of bespoke two, three and four-bedroom homes.



The Gatley

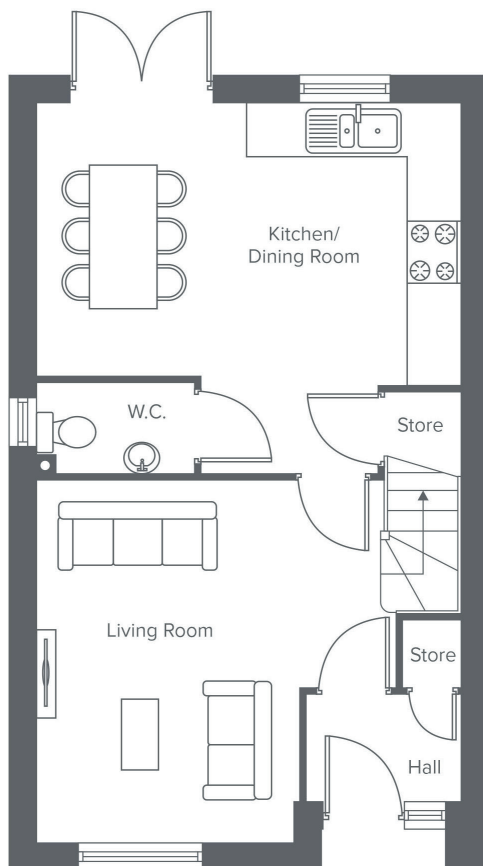
Shared Ownership plots

117, 119, 121, 154, 156,
159, 161, 163, 165, 167

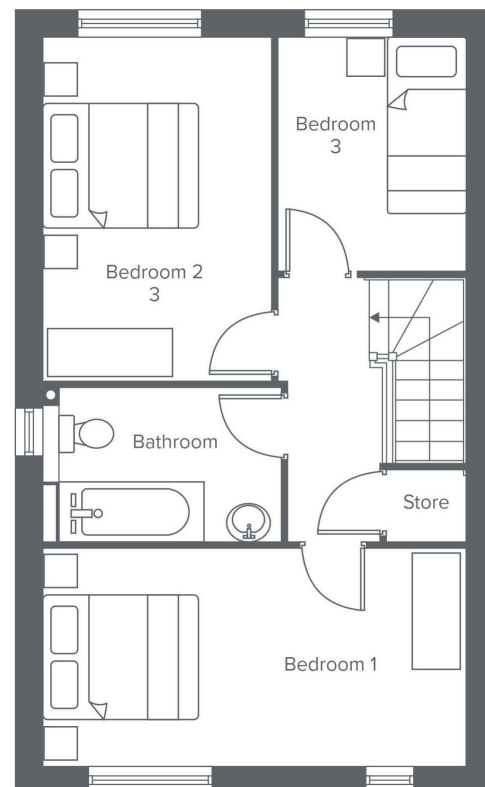
Rent to Buy plots

38

THE GATLEY WHITEFIELD BROOK



Ground Floor	Metric	Imperial
Kitchen / Dining	3.0 x 4.7	9'10" x 15'5"
Living Room	4.0 x 2.9	13'1" x 9'6"
W.C.	1.0 x 1.8	3'3" x 5'10"



First Floor	Metric	Imperial
Bedroom 1	2.5 x 4.7	8'2" x 15'5"
Bedroom 2	3.9 x 2.5	12'9" x 8'2"
Bedroom 3	2.6 x 2.1	8'6" x 6'10"
Bathroom	1.7 x 2.6	5'6" x 8'6"

CONTACT OUR TEAM

📞 0151 601 8934
🌐 yourhousinggroup.co.uk

📱 @yourhousinggroup
🐦 @Your_Housing
📘 @yourhousing