

THE NEWTON WHITEFIELD BROOK

4 | 

2 | 

1 | 



KEY FEATURES:

- Set over three storeys
- Four double bedrooms
- En-suite from master bedroom
- Driveway parking
- Integrated kitchen appliances
- Spacious kitchen/diner



The Newton

Shared Ownership plots

21, 99, 229, 234, 246,
250

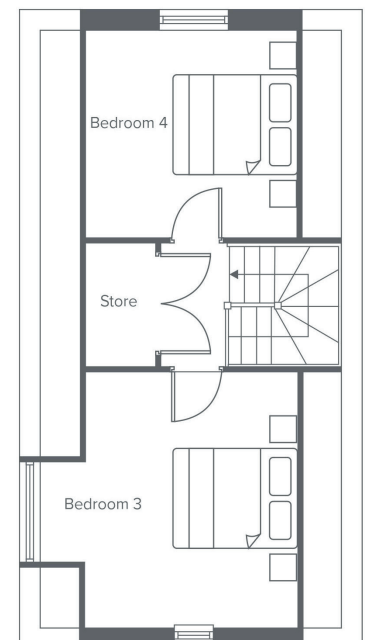
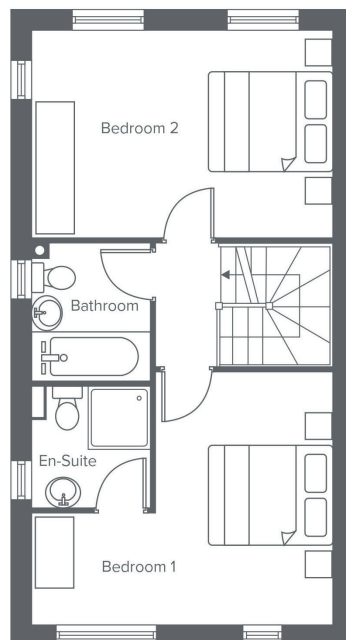
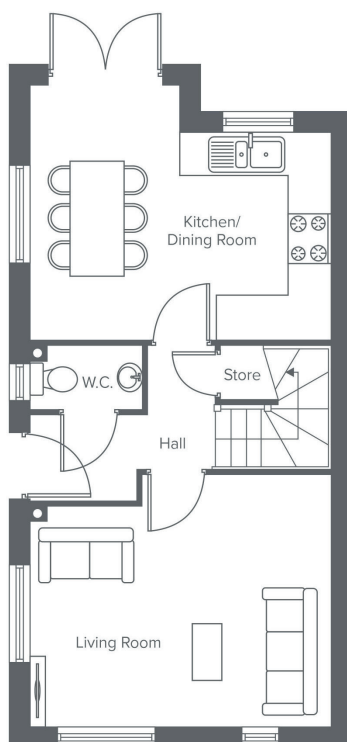
Rent to Buy plots

5, 39, 103, 151

WHITEFIELD DRIVE, KIRKBY, LIVERPOOL L32 4TD

A range of bespoke two, three and four-bedroom homes.

THE NEWTON WHITEFIELD BROOK




Ground Floor	Metric	Imperial
Kitchen / Dining	3.7 x 4.3	12'1" x 14'1"
Living Room	3.7 x 4.3	12'1" x 14'1"
W.C.	0.9 x 1.6	2'11" x 5'2"


First Floor	Metric	Imperial
Bedroom 1	3.7 x 4.3	12'1" x 14'1"
Bedroom 2	3.0 x 4.3	9'10" x 14'1"
Bathroom	2.0 x 1.7	6'6" x 5'6"


Second Floor	Metric	Imperial
Bedroom 3	3.7 x 3.1	12'1" x 10'2"
Bedroom 4	3.0 x 3.1	9'10" x 10'2"


CONTACT OUR TEAM

 0151 601 8934

 yourhousinggroup.co.uk

 @yourhousinggroup

 @Your_Housing

 @yourhousing