

THE SANKEY WHITEFIELD BROOK



3 | 

2 | 

1 | 

KEY FEATURES:

- Set over three storeys
- Three double bedrooms
- En-suite from master bedroom
- Spacious kitchen/diner
- Integrated kitchen appliances
- Separate lounge

WHITEFIELD DRIVE, KIRKBY, LIVERPOOL L32 4TD

A range of bespoke two, three and four-bedroom homes.

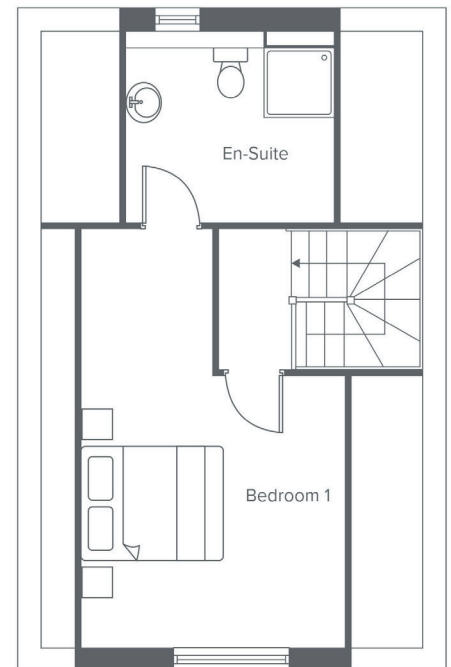
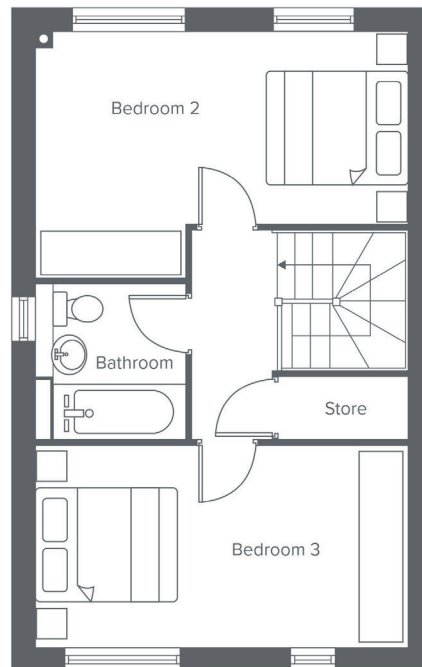
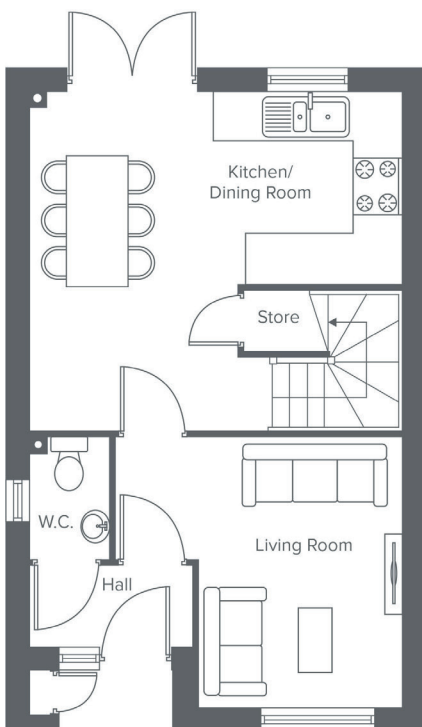


The Sankey

Shared Ownership plots

10-15, 18-20, 48-50,
251-254, 256, 257, 259-
261

THE SANKEY WHITEFIELD BROOK




Ground Floor	Metric	Imperial
Kitchen/Dining	4. x 4.7	14'1" x 15'5"
Living Room	3.5 x 2.6	11'5" x 8'6"
W.C.	1.0 x 1.5	3'3" x 4'11"


First Floor	Metric	Imperial
Bedroom 2	3.1 x 4.7	10'2" x 15'5"
Bedroom 3	2.6 x 4.7	8'6" x 15'5"
Bathroom	2.0 x 1.9	6'6" x 5'6"


Second Floor	Metric	Imperial
Bedroom 1	5.3 x 3.2	17'4" x 10'5"
En-Suite	2.4 x 2.6	7'10" x 8'6"


CONTACT OUR TEAM

 0151 601 8934

 yourhousinggroup.co.uk

 @yourhousinggroup

 @Your_Housing

 @yourhousing